

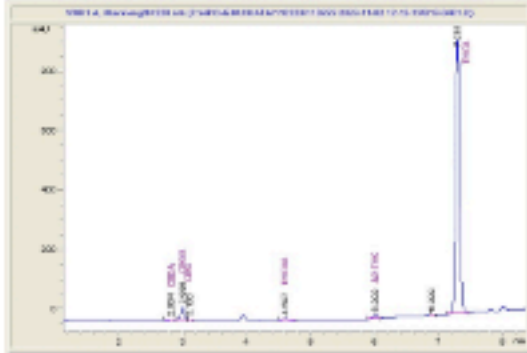

ASTRIA FARM
Sample 656-110223-047
Jealousy

Sample Submitted: 11-02-2023; Report Date: 11-07-2023

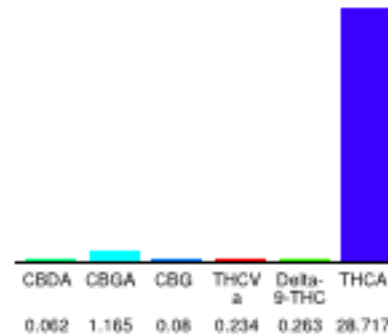
Jealousy

Plant Material: Hemp Flower

Chromatogram



Cannabinoid Profile



Cannabinoid Profile by HPLC

0.26%
Delta-9-THC

0.00%
CBD

30.52%
Total Cannabinoids

Cannabinoid	% wt	mg/g
CBDA	0.062	0.62
CBGA	1.165	11.65
CBG	0.08	0.8
THCVa	0.234	2.34
Delta-9-THC	0.263	2.63
THCA	28.72	287.17
Total Cannabinoids	30.52	305.2
Calculated Total THC	25.45	254.48
Calculated CBD Yield	0.05	0.54

Calculated Total THC = Delta-9-THC + 0.877 * THCA

Calculated Maximum CBD Yield = CBD + 0.877 * CBDA

Marin Analytics, LLC
 250 Bel Marin Keys Blvd, Suite D4
 Novato, CA 94949
 833-321-TEST / info@marinanalytics.com


Mike Clemmons
 Lab Manager

This sample has been tested by Marin Analytics, LLC using valid testing methodologies and a quality system. Values reported relate only to the sample tested. Marin Analytics, LLC makes no claims as to the efficacy, safety, or other risks associated with any detected or non-detected levels of any compounds reported herein. This Certificate shall not be reproduced except in full without the written approval of Marin Analytics, LLC. Copyright 2023 Marin Analytics, LLC All Rights Reserved.